

# Kinglake Complex Media map (INITIAL DATA INCOMPLETE)

Map Produced: Mon Feb 09 02:23:15 EST 2009 by Firemap



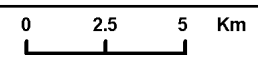
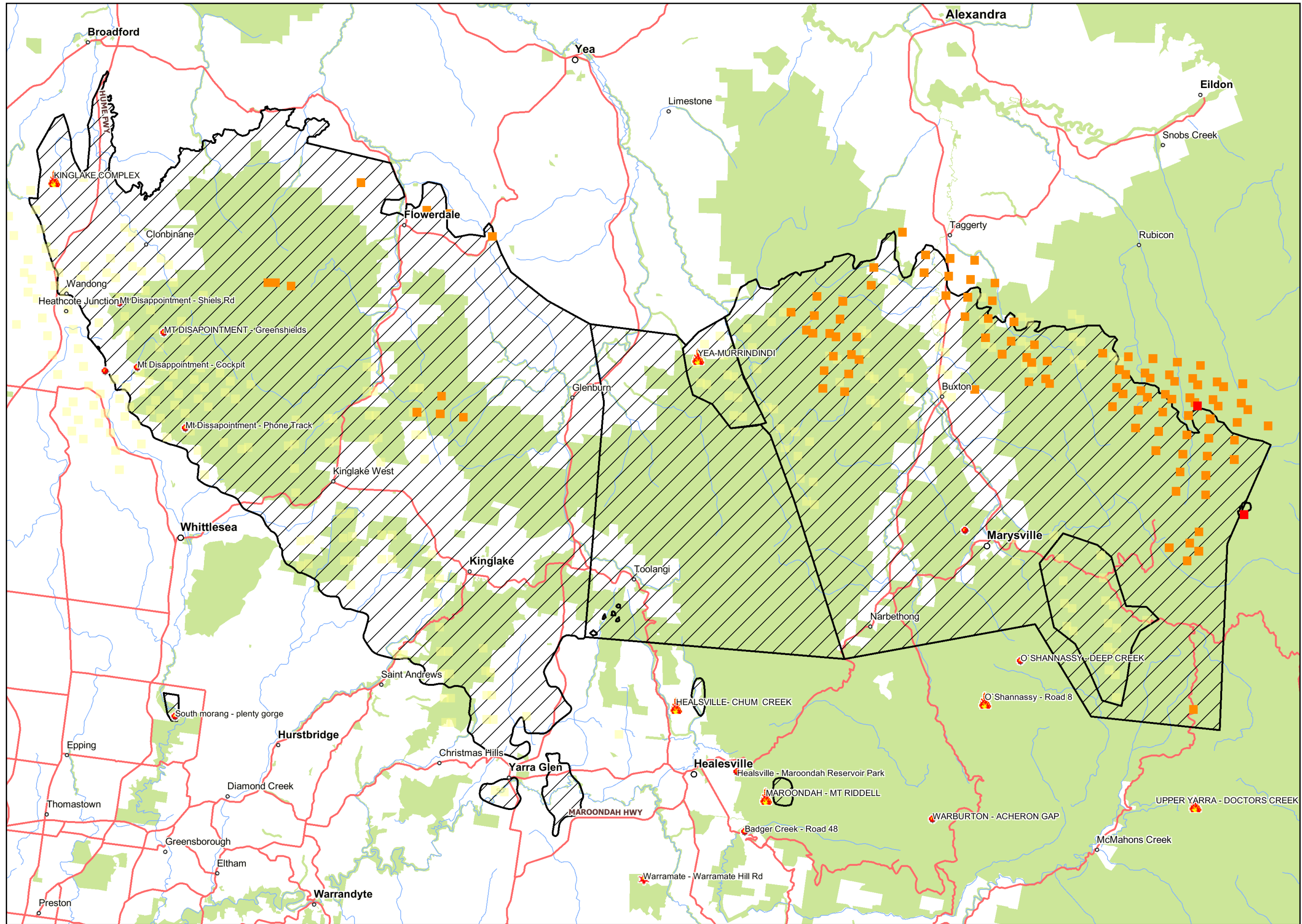
Fire Area: 1750hr 8/2/2009  
Sat. Hotspots: 0035hr 9/2/2009

### Legend

- Burnt Area
- Fire Origin - Going; Contained; Controlled
- Hot Spots Last 12 hrs
- Hot Spots 12 - 24 hrs
- Township
- Local Features
- Main Road
- Minor Road / Track
- Hydrology
- Permanent Waterbody
- Public Land

Map Notes: This map is a partial fire extent based on initial information

Hotspot data produced from satellite detection, courtesy of Geoscience Australia & NASA Modis satellites.  
Limitations of the Data:  
1/ The hotspot location on any map is only accurate to within 1.5km.  
2/ Not all hotspots are detected by the satellites.  
3/ The satellite detects any heat source that is hotter than normal.



Disclaimer: This map is a snapshot generated from Victorian Government data. This material may be of assistance to you but the State of Victoria does not guarantee that the publication is without flaw of any kind or is wholly appropriate for your particular purposes and therefore disclaims all liability for error, loss or damage which may arise from reliance upon it. All persons accessing this information should make appropriate enquiries to assess the currency of the data. (c) The State of Victoria Department of Sustainability and Environment 2008

